

Model: Model-J Finisher (SR770)		Date: 19-Feb-03	No.: MG565001
Modified Article: Main Control Board		Prepared by: Hideki Taguchi	
From: Technical Services Sec. Service Planning Dept.			
Reason for Modification:	<input type="checkbox"/> Parts catalog correction <input type="checkbox"/> To facilitate assembly <input type="checkbox"/> Part standardization	<input type="checkbox"/> Vendor change <input checked="" type="checkbox"/> To improve reliability <input type="checkbox"/> Other	<input type="checkbox"/> To meet standards ( )

The Capacitor below has been changed to improve the reliability of the motor driver on the Main Control Board.

Old part number	New part number	Description	Q'ty	Int	Page	Index	Note
G5655520	G5655530	Main Control Board	1 - 1	X/O	47 51	5 *	
16608104		Capacitor - 0.1uF+80-20%25V	57-56		51	193	C228
16405101	16044860	Capacitor - 100uF +-20% 50V	1 - 1		51	194*	C135

194\*: New index

### CAPACITOR

Symbol No.	Index No.
C135	194
C228	-

### RCL (Japan) Production

Model Name	Destination	Code	Serial Number
SR 770	USA, Europe, Asia.	G565-17	P6420300001
	Europe, etc.	G565-26	4H80320001

Model: Model-J Finisher (SR770)		Date: 10-Jun-03	No.: MG565002
Modified Article: Cam		Prepared by: H.Taguchi	
From: 1st Tech. Support Sec. Service Support Dept.			
Reason for Modification:	<input type="checkbox"/> Parts catalog correction <input type="checkbox"/> To facilitate assembly <input type="checkbox"/> Part standardization	<input type="checkbox"/> Vendor change <input checked="" type="checkbox"/> To improve reliability <input type="checkbox"/> Other	<input type="checkbox"/> To meet standards (      )

The following has been modified to increase the reliability of cam operation by ensuring a greater gap between the cam and driven roller link.

Old part number	New part number	Description	Q'ty	Int	Page	Index	Note
B3523175		Cam – Paper Exit Unit	1 - 1	O/O	43	7	
	B3523176	Cam: Paper Exit Unit					

### RCL (Japan) Production

Model Name	Destination	Code	Serial Number
SR 770	USA, Europe, Asia.	G565-17	P6410700001
	Europe, etc.	G565-26	4H80810001

Model: Model-J Finisher (SR770)		Date: 10-Jun-03	No.: MG565003
Modified Article: Rail Tape		Prepared by: H.Taguchi	
From: 1st Tech. Support Sec. Service Support Dept.			
Reason for Modification:	<input type="checkbox"/> Parts catalog correction <input type="checkbox"/> To facilitate assembly <input type="checkbox"/> Part standardization	<input type="checkbox"/> Vendor change <input checked="" type="checkbox"/> To improve reliability <input type="checkbox"/> Other	<input type="checkbox"/> To meet standards (        )

The Rail Tape has been lengthened to ensure that it stays properly fixed to the coupling rail when the Finisher is docked or separated from the machine.

Old part number	New part number	Description	Q'ty	Int	Page	Index	Note
G5651303		Rail Tape	1 - 1	X/O	7	28	
	G5651305	Tape: Rail					

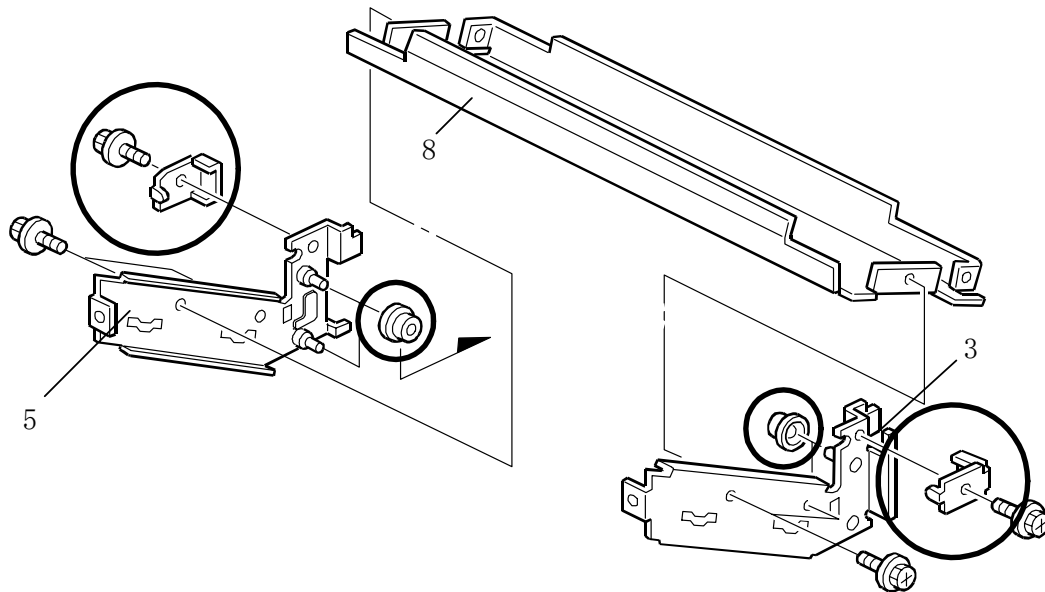
### RCL (Japan) Production

Model Name	Destination	Code	Serial Number
SR 770	USA, Europe, Asia.	G565-17	P641100001
	Europe, etc.	G565-26	4H81110001

Model: Model-J Finisher (SR770)		Date: 3-Dec-03	No.: MG565004
Modified Article: Side Plate		Prepared by: Hideki Taguchi	
From: 1st Tech. Support Sec. Service Support Dept.			
Reason for Modification:	<input type="checkbox"/> Parts catalog correction <input type="checkbox"/> To facilitate assembly <input type="checkbox"/> Part standardization	<input type="checkbox"/> Vendor change <input checked="" type="checkbox"/> To improve reliability <input type="checkbox"/> Other	<input type="checkbox"/> To meet standards (      )

The material for the following parts has been changed to increase durability. In accordance with this change, the attachment positions for the guide plate and roller have been changed as shown in the illustration.

Old part number	New part number	Description	Q'ty	Int	Page	Index	Note
B3523810	B3523812	Side Plate – Lower Front	1 - 1	O/O	41	3	
B3523820	B3523822	Side Plate – Lower Rear	1 - 1	O/O	41	5	
B3523831	B3523830	Base – Lower Tray	1 - 1	O/O	41	8	



**Reissued: 15-Jan-04**

Model: Model-J Finisher (SR770)	Date: 3-Dec-03	No.: MG565005a
---------------------------------	----------------	----------------

**MB Correction**

The items in bold italics have been corrected or added.

Modified Article: Side Plate		Prepared by: H.Taguchi	
From: 1st Tech. Support Sec. Service Support Dept.			
Reason for Modification:	<input type="checkbox"/> Parts catalog correction	<input type="checkbox"/> Vendor change	<input type="checkbox"/> To meet standards (     )
	<input type="checkbox"/> To facilitate assembly	<input type="checkbox"/> To improve reliability	
	<input type="checkbox"/> Part standardization	<input checked="" type="checkbox"/> Other	

The following parts are now produced using chrome-free material.

Old part number	New part number	Description	Q'ty	Int	Page	Index	Note
B3523812	B5453812	Side Plate – Lower Front	1 - 1	O/O	41	3	
<b><i>B3523822</i></b>	<b><i>B5453822</i></b>	Side Plate – Lower Rear	1 - 1	O/O	41	5	
B3523830	B5453830	Base – Lower Tray	1 - 1	O/O	41	8	